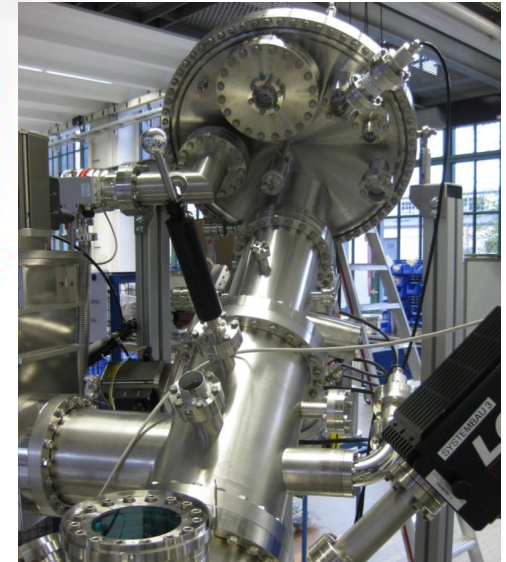
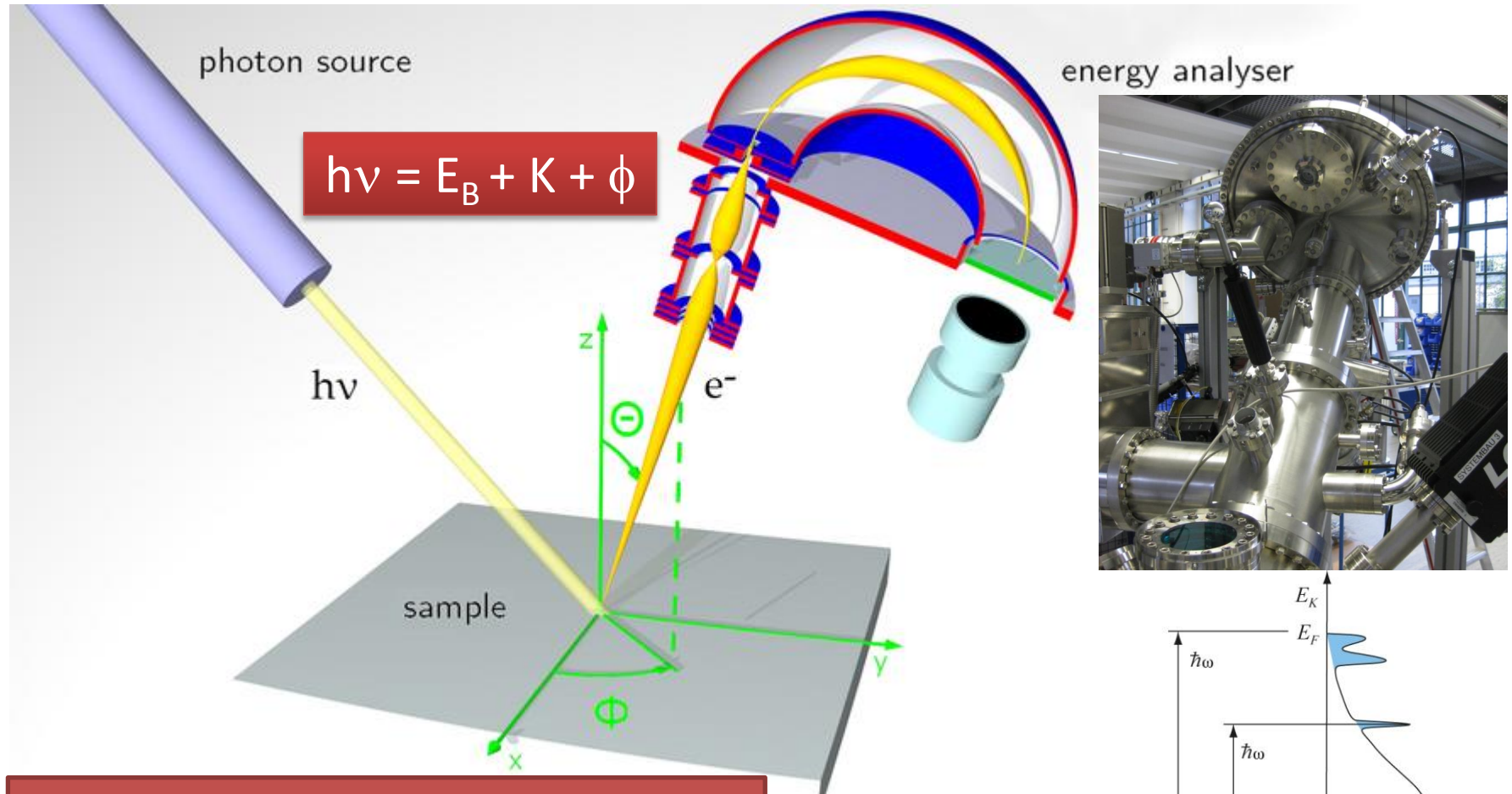
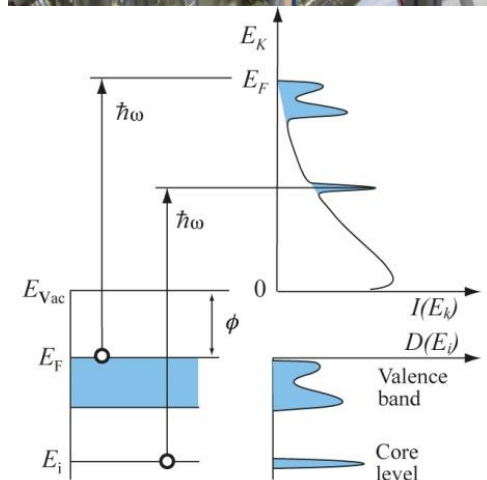


# Advanced Photoemission Spectroscopy

Dr. Jordi Fraxedas

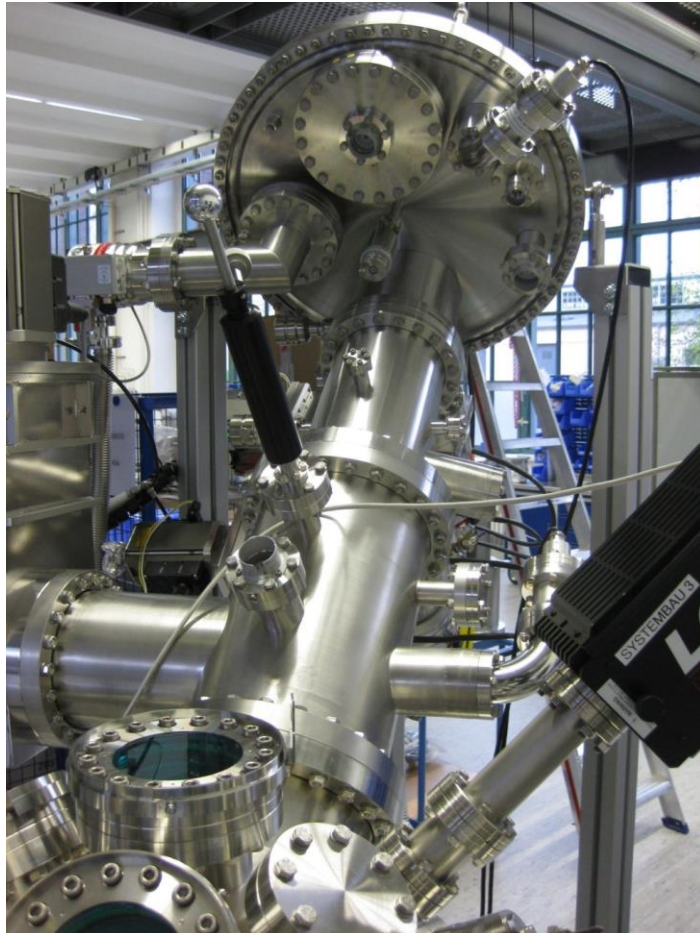


- UHV ( $\sim 10^{-10}$  mbar)
- Non-insulating samples
- Surface sensitive

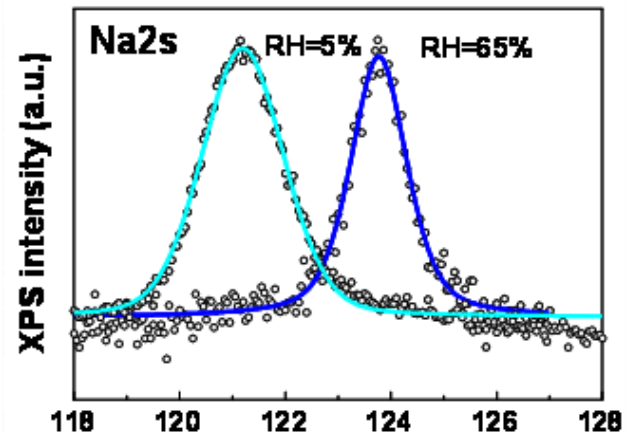
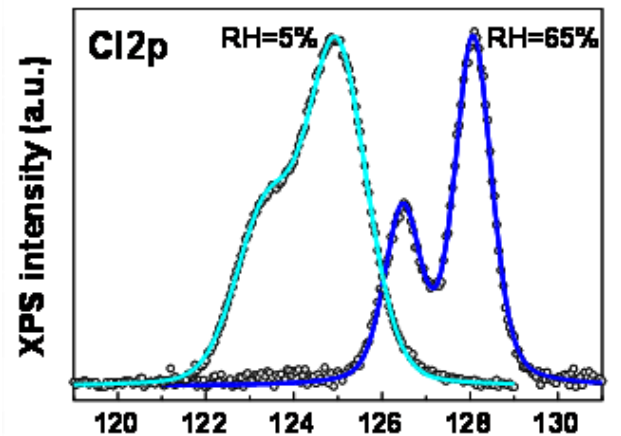


## Near Ambient Pressure Photoemission:

- Below 100 mbar (from  $10^{-10}$  to 100)
- Insulating samples



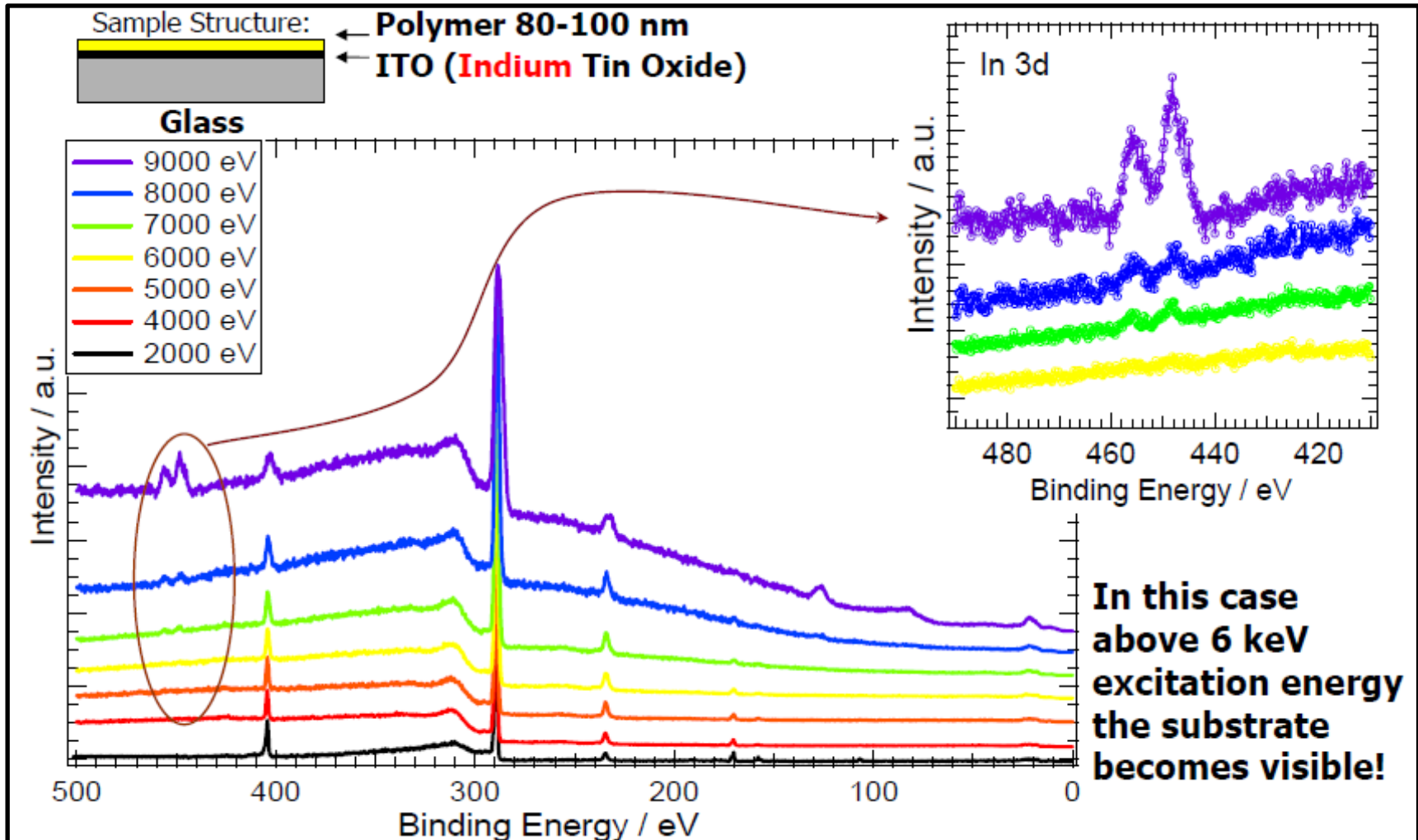
### Water/NaCl (2 mbar)



Exposure of surfaces to vapors of  $\text{H}_2\text{O}$ ,  $\text{O}_2$ ... under external irradiation

# High Kinetic Energy Photoemission:

- Burried interfaces



Study of burried interfaces. Mean free path for polymers is larger.